

PROJEKT : MFH WINKLERSTRASSE 28

8424 EMBRACH

OB. NR. : 17/80

BAUHERR : GASSER & PARTNER ARCHITEKTEN + GU AG

8180 BÜLACH

PL. NR. : 01

# BAUEINGABE: SITUATION



PL. GR. : 21/30

MST. : 1 : 500

DAT. : 03.07.2017



GASSER & PARTNER ARCHITEKTEN + GU AG 8180 BÜLACH  
SONNEGGWEG 5 TELEFON 044 863 70 80 TELEFAX 044 863 70 90

GEZ. : SK

REV. :

BÜLACH:

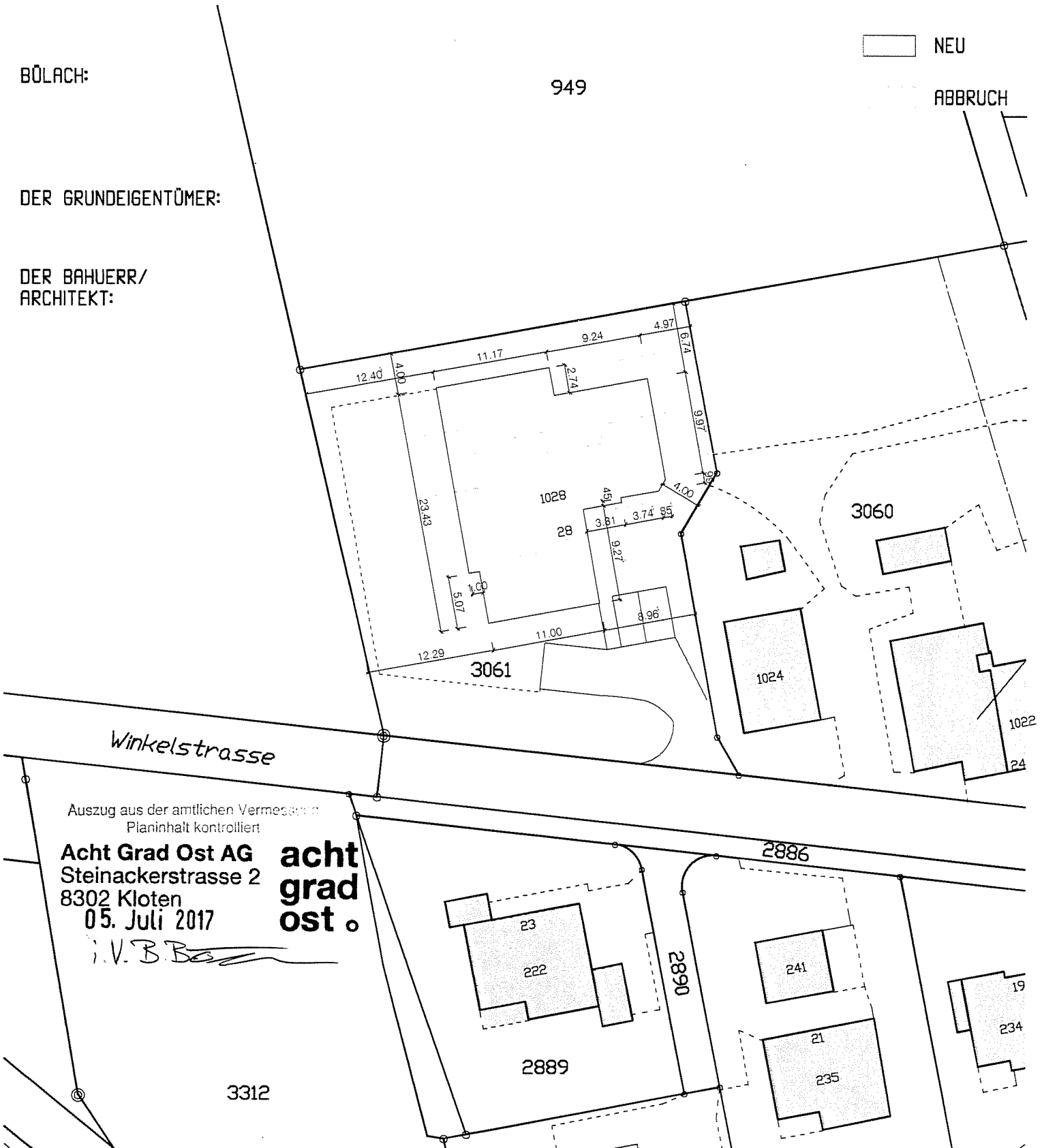
949

NEU

ABBRUCH

DER GRUNDEIGENTÜMER:

DER BAUHERR/  
ARCHITEKT:



*Winkelstrasse*

Auszug aus der amtlichen Vermessung  
Planinhalt kontrolliert

**Acht Grad Ost AG**  
Steinackerstrasse 2  
8302 Kloten  
05. Juli 2017

**acht  
grad  
ost**

*V. B. B.*

3312

ATTIKA WHG 7  
OG WHG 5  
UG/EG WHG 2

OG/TG WHG 4  
UG/EG WHG 1

OG WHG 6  
EG WHG 3

BP 1 BP 2

SPIEL- UND RUHEFLÄCHE

WINKLERSTRASSE

0.0m 10m  
NR. 301 CA DAT: 15.08.17 REV: 15.08.17  
GASSER & PARTNER ARCH.+ GU AG, 8180 BÖLACH

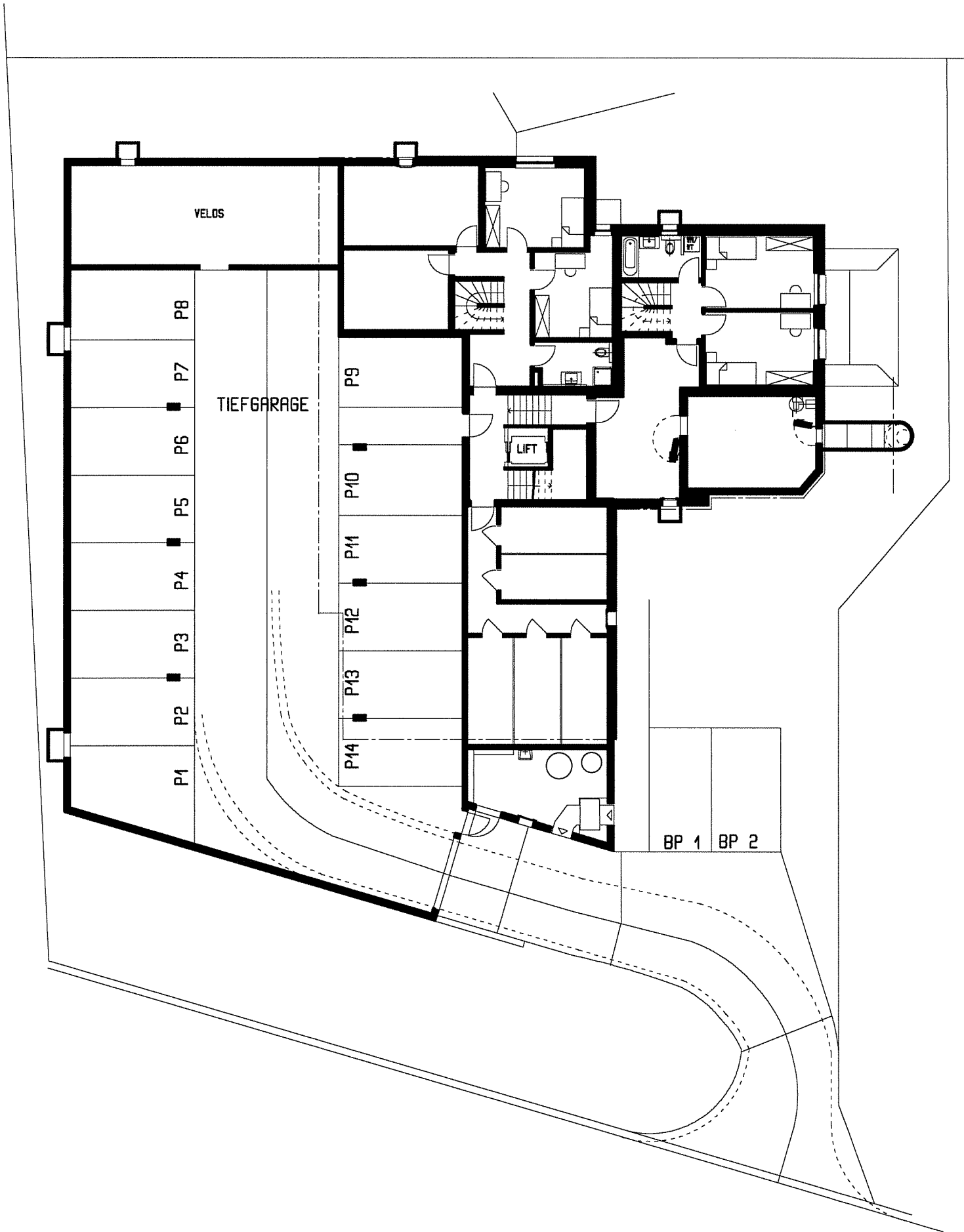


UMGEBUNG

MFH WINKLERSTRASSE 28

1:200

8424 EMBRACH



0.0m 10m  
 NR. 302 CA DAT: 15.08.17 REV: 15.08.17  
 GASSER & PARTNER ARCH.+ GU AG, 8180 BÜLACH

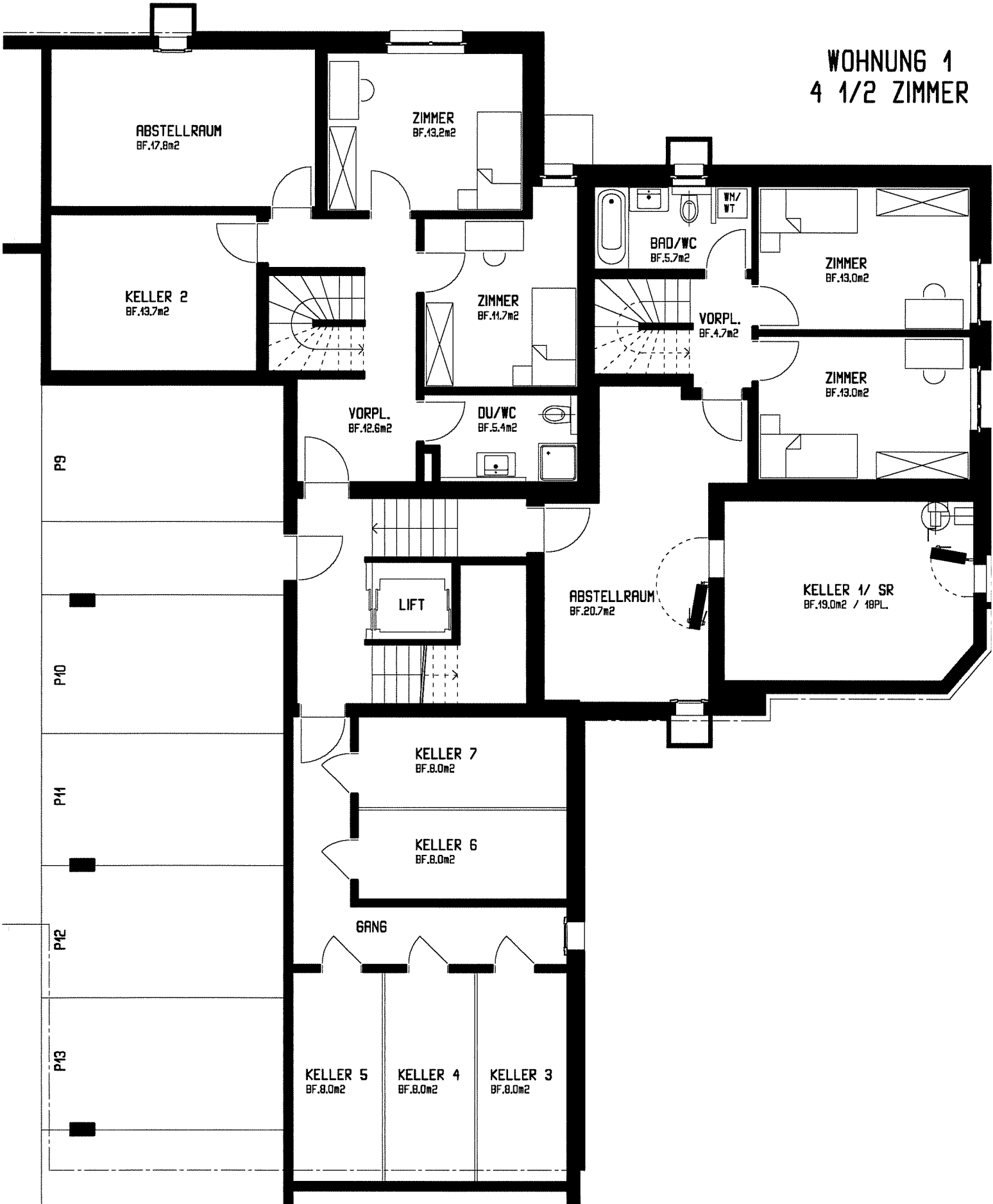


**UNTERGESCHOSS + T6**  
 MFH WINKLERSTRASSE 28

**1:200**  
 8424 EMBRACH

WOHNUNG 2  
5 1/2 ZIMMER

WOHNUNG 1  
4 1/2 ZIMMER



0.0m 5.0m

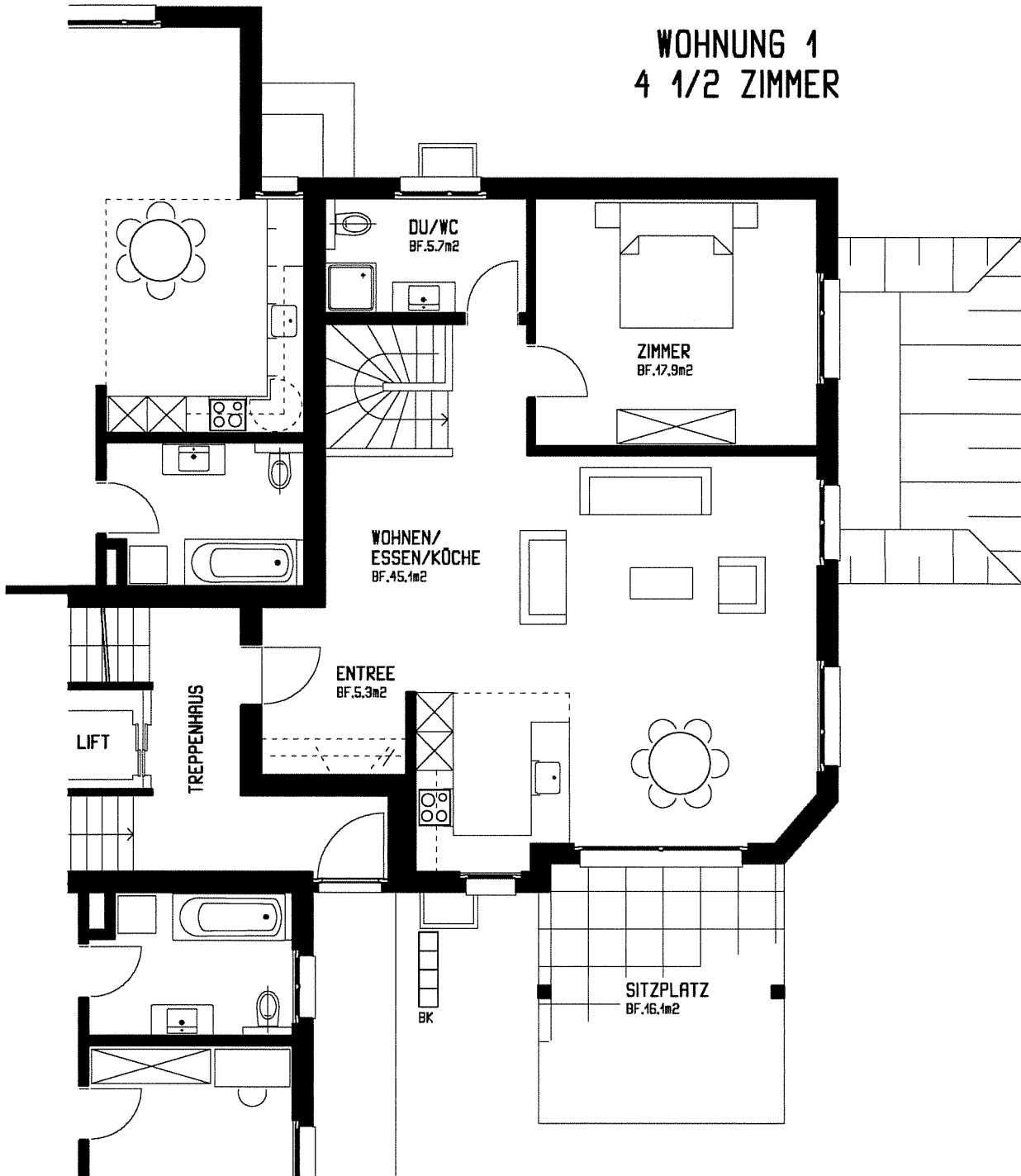
NR. 303 CA DAT: 15.08.17 REV: 15.08.17  
GASSER & PARTNER ARCH.+ GU AG, 8180 BÖLACH



UNTERGESCHOSS  
MFH WINKLERSTRASSE 28

1:100  
8424 EMBRACH

WOHNUNG 1  
4 1/2 ZIMMER



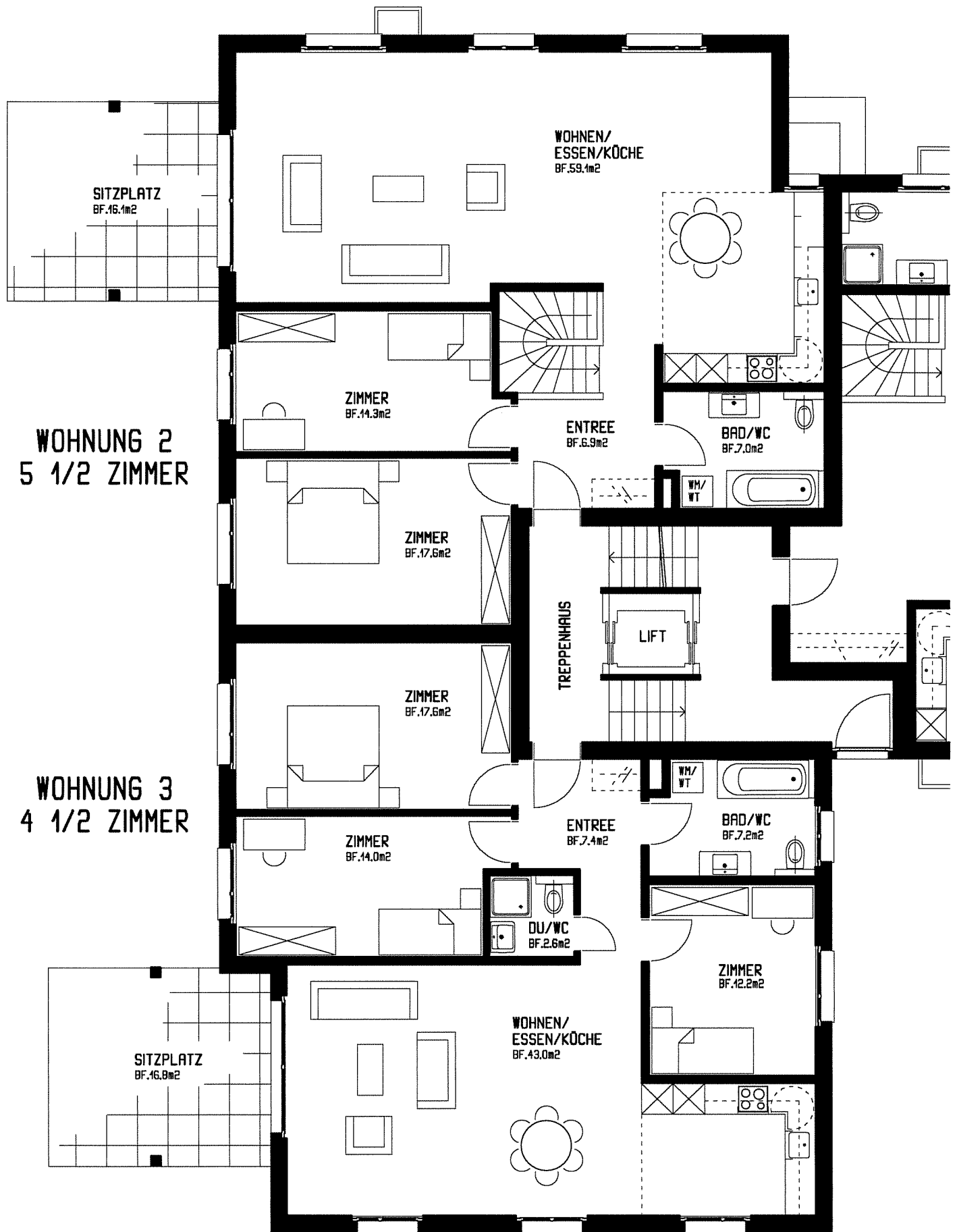
0.0m 5.0m

NR. 304 CA DAT: 15.08.17 REV: 15.08.17  
GASSER & PARTNER ARCH.+ GU AG, 8180 BÖLACH



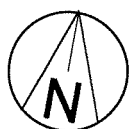
ERDGESCHOSS  
MFH WINKLERSTRASSE 28

1:100  
8424 EMBRACH



0,0m 5,0m

NR. 305 CA DAT: 15.08.17 REV: 15.08.17  
BASSER & PARTNER ARCH.+ GU AG, 8180 BÖLACH



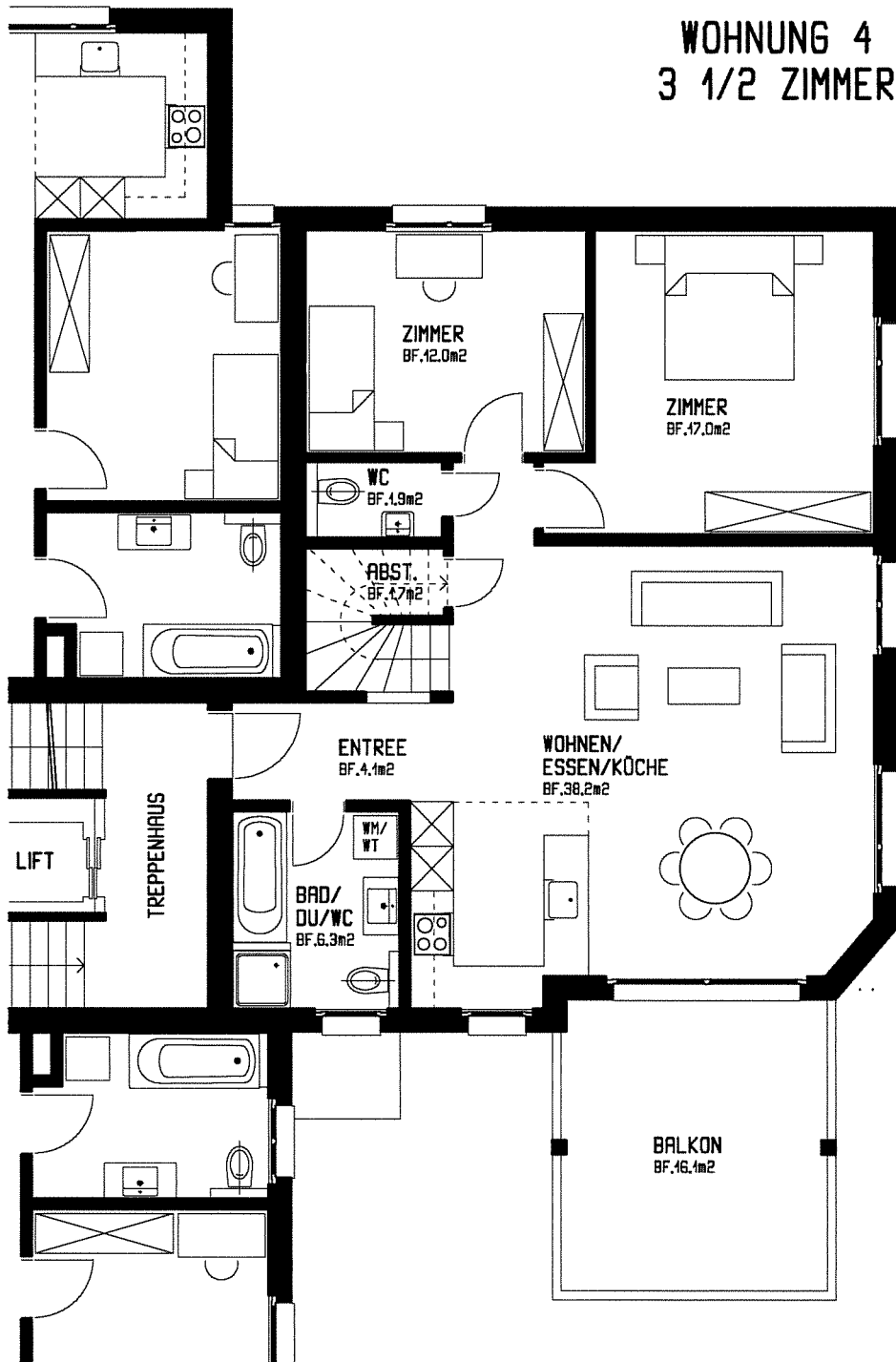
**ERDGESCHOSS**

MFH WINKLERSTRASSE 28

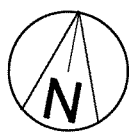
**1:100**

8424 EMBRACH

**WOHNUNG 4  
3 1/2 ZIMMER**

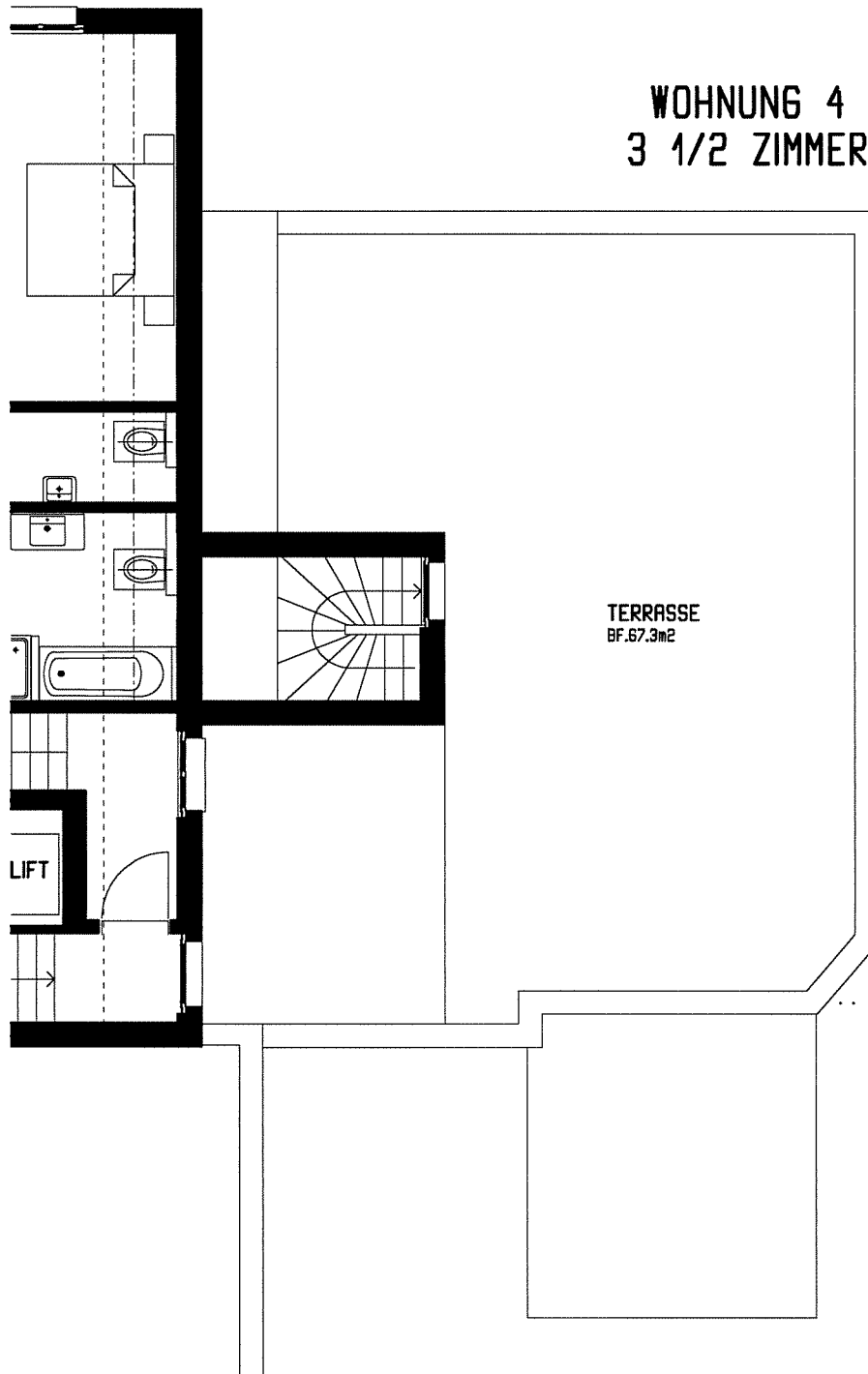


0.0m 5.0m  
 NR. 306 CA DAT: 15.08.17 REV: 15.08.17  
 GASSER & PARTNER ARCH.+ GU AG, 8180 BÖLACH



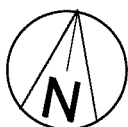
**OBERGESCHOSS** **1:100**  
 MFH WINKLERSTRASSE 28 8424 EMBRACH

WOHNUNG 4  
3 1/2 ZIMMER



0.0m 5.0m

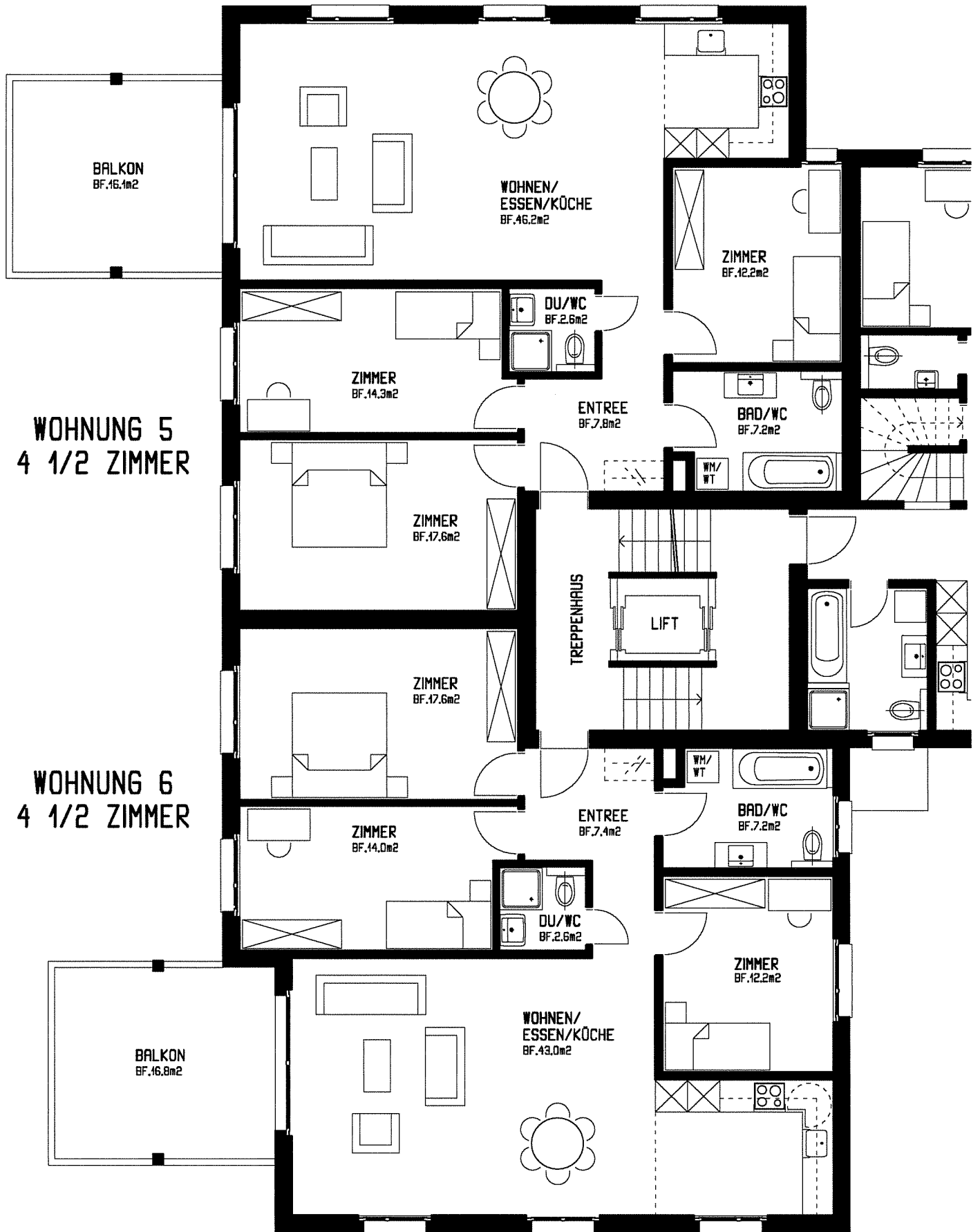
NR. 307 CA DAT: 15.08.17 REV: 11.09.17  
GASSER & PARTNER ARCH.+ G.U. AG, 8180 BÖLACH



TERRASSENGESCHOSS  
MFH WINKLERSTRASSE 28

1:100  
8424 EMBRACH



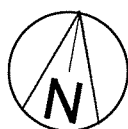


**WOHNUNG 5**  
4 1/2 ZIMMER

**WOHNUNG 6**  
4 1/2 ZIMMER



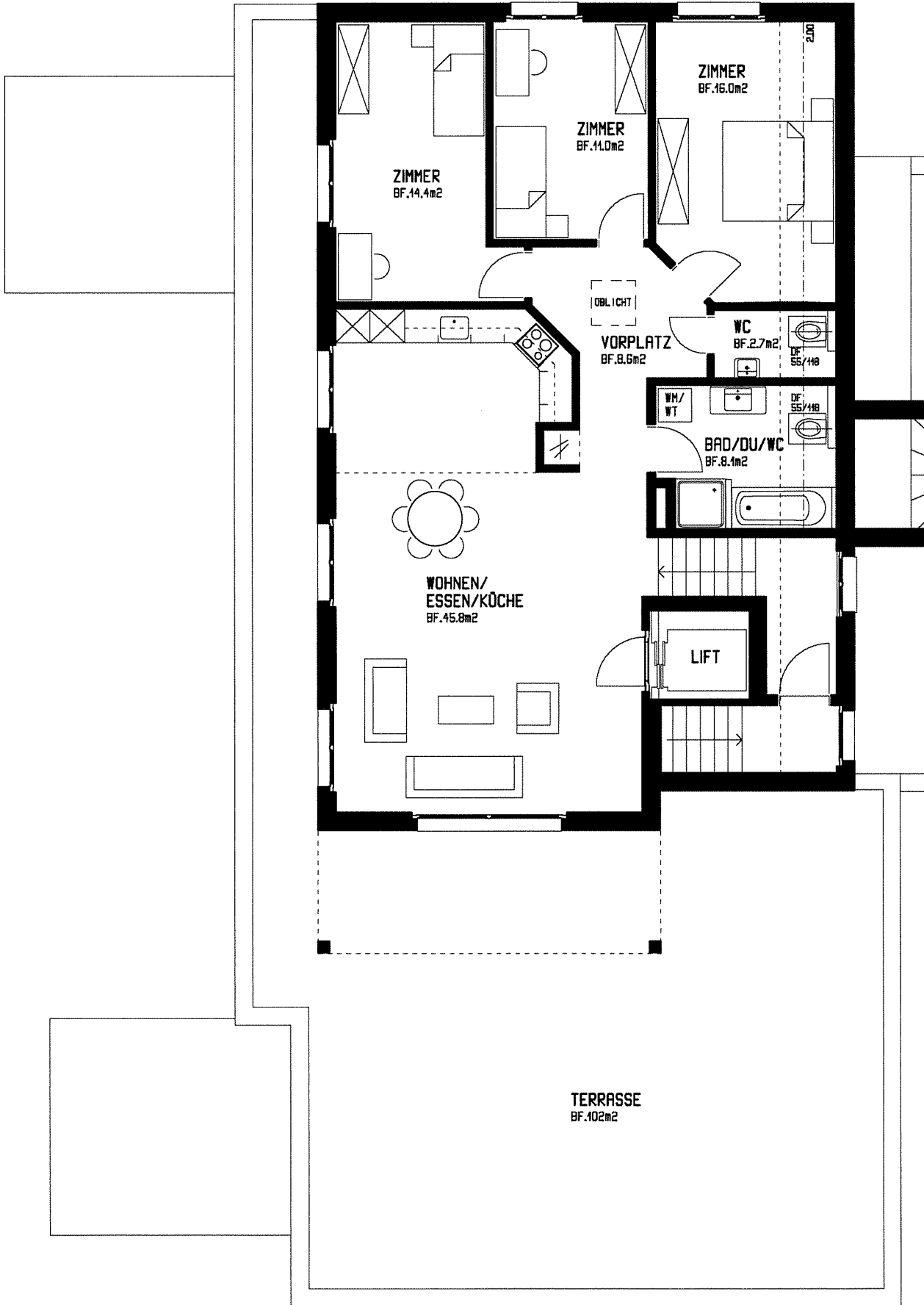
NR. 308 CA DAT: 15.08.17 REV: 15.08.17  
GASSER & PARTNER ARCH.+ GU AG, 8180 BÖLACH



**OBERGESCHOSS**  
MFH WINKLERSTRASSE 28

**1:100**  
8424 EMBRACH

# WOHNUNG 7 4 1/2 ZIMMER



0.0m 5.0m  
NR. 309 CA DAT: 15.08.17 REV: 15.08.17  
GASSER & PARTNER ARCH.+ GU AG, 8180 BÖLACH



ATTIKAGESCHOSS  
MFH WINKLERSTRASSE 28

1:100  
8424 EMBRACH



ATTIKAGESCHOß

OBERGESCHOß

ERDGESCHOß

UNTERGESCHOß

WOHNEN/ESSEN  
+1.30

WOHNEN/ESSEN  
-1.48

ZIMMER  
-1.32

242

242

242

BAD

WC

BAD/WC

BAD/WC

BAD/WC

GANG

GANG

VORPL.

WOHNEN/ESSEN  
+5.56

ZIMMER  
+2.78

ZIMMER  
435.45±0.00

TIEFGARAGE

-2.84

242

242

242

242

0.0m 5.0m

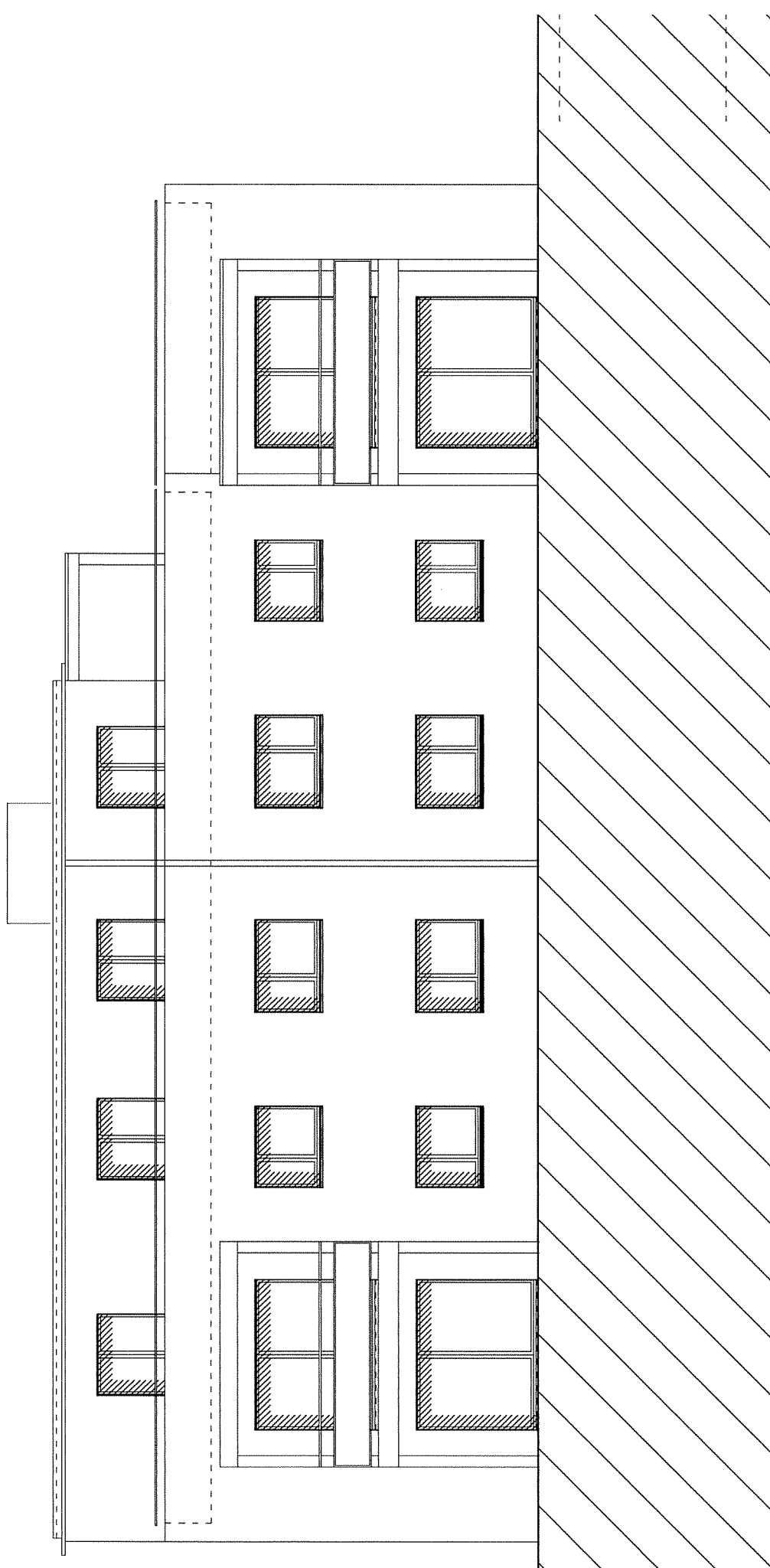
NR. 310 CA DAT: 15.08.17 REV: 15.08.17  
BASSER & PARTNER ARCH.+ BU AG, 8180 BÜLACH

SCHNITT

MFH WINKLERSTRASSE 28

1:100

8424 EMBRACH



0.0m

5.0m

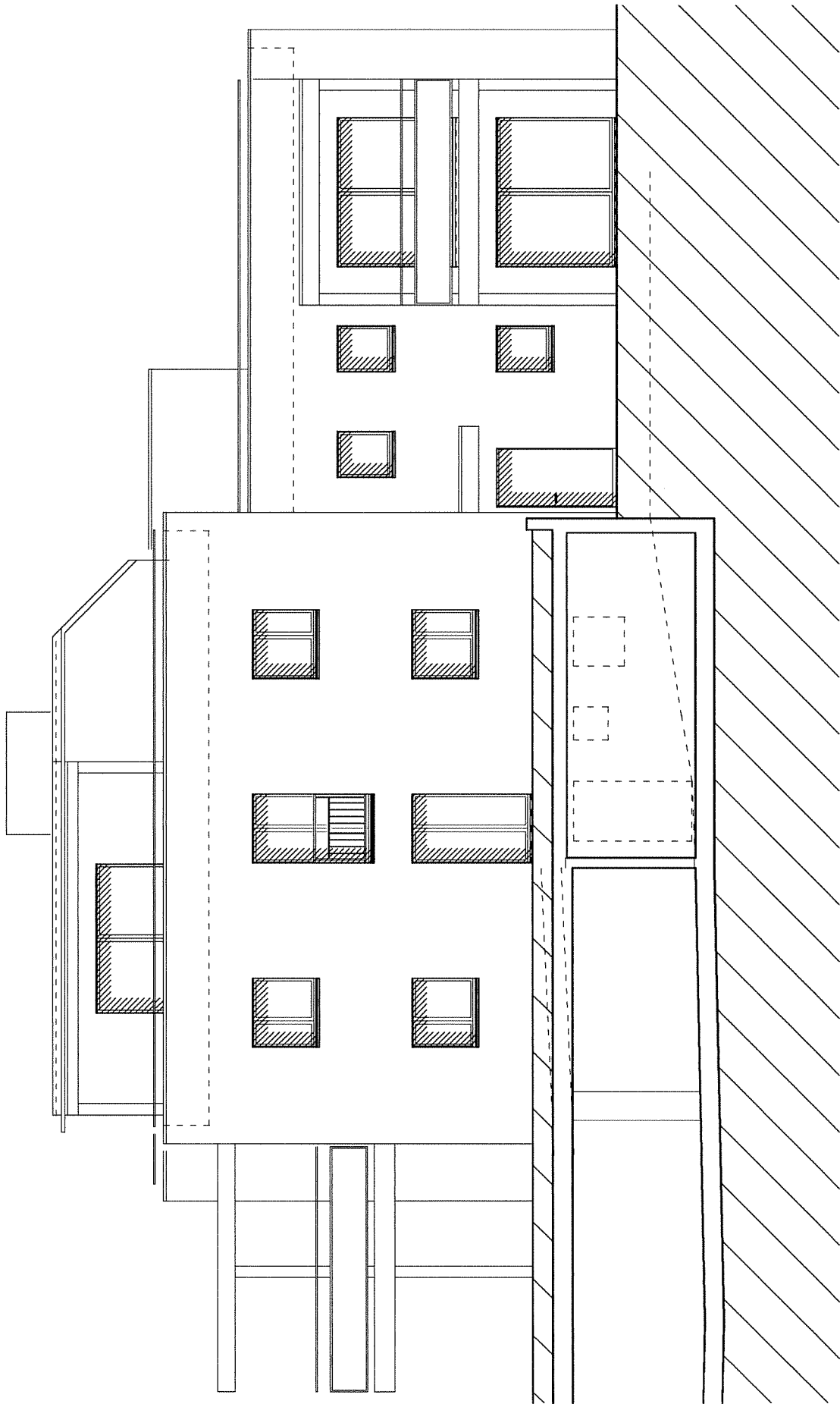
NR. 311 CA DAT: 15.08.17 REV: 15.08.17  
GASSER & PARTNER ARCH.+ GU AG, 8180 BÖLACH

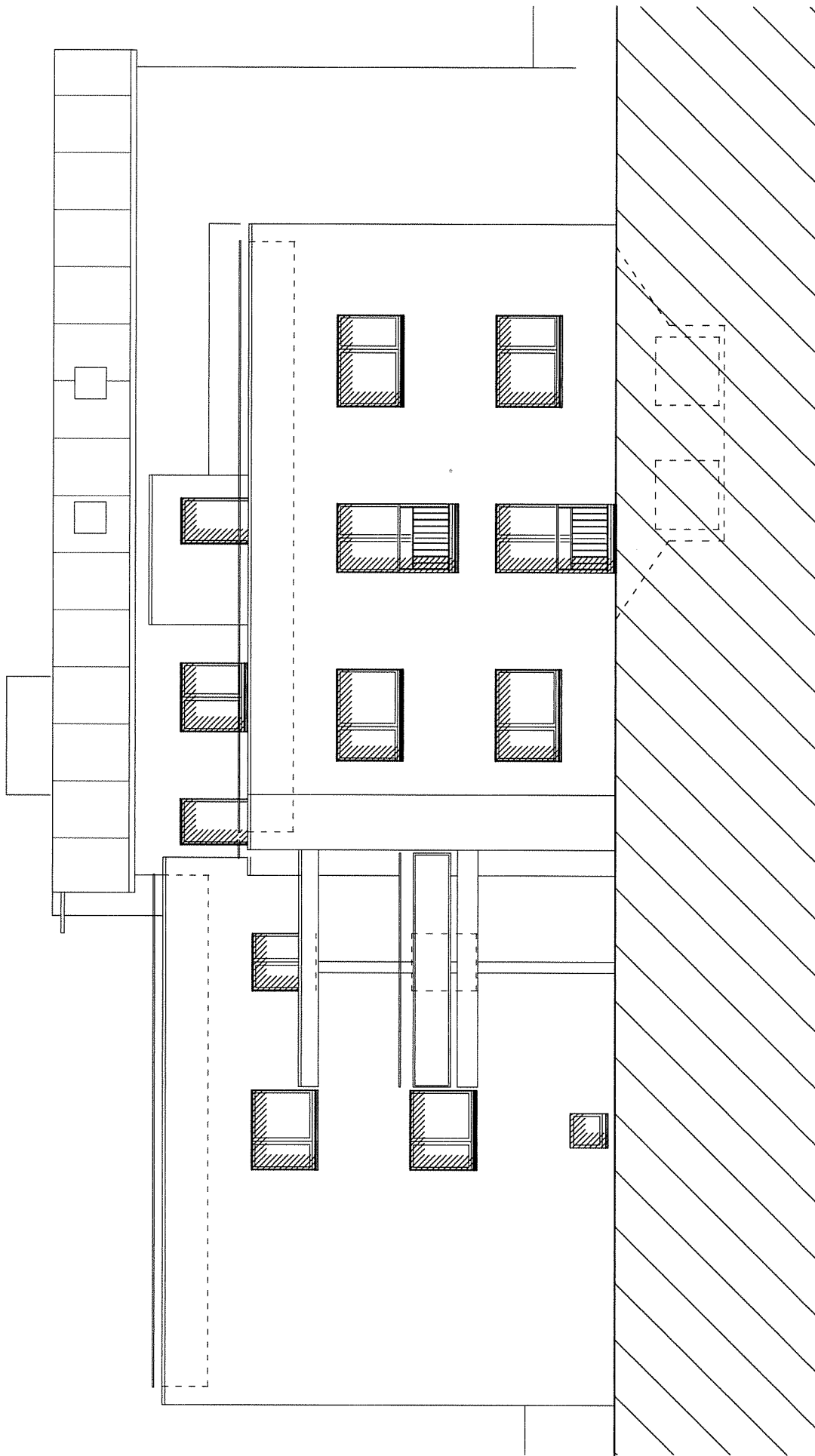
**WESTFASSADE**

MFH WINKLERSTRASSE 28

**1:100**

8424 EMBRACH



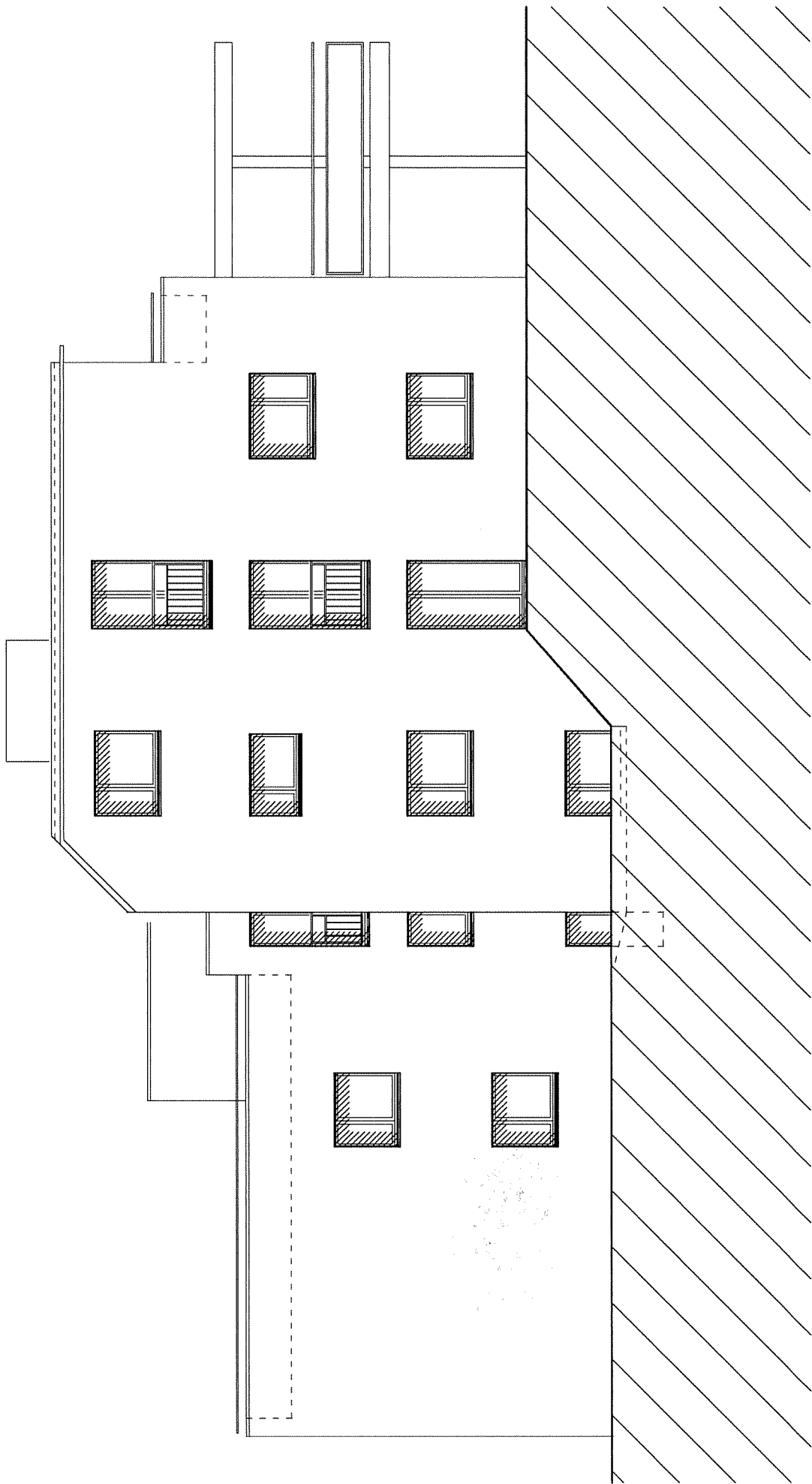


0.0m 5.0m

NR. 313 CA DAT: 15.08.17 REV: 15.08.17  
GASSER & PARTNER ARCH.+ GU AG, 8180 BÖLACH

**OSTFASSADE**  
MFH WINKLERSTRASSE 28

**1:100**  
8424 EMBRACH



0.0m 5.0m

NR. 314 CA DAT: 15.08.17 REV: 15.08.17  
GASSER & PARTNER ARCH.+ GU AG, 8180 BÖLACH

NORDFASSADE  
MFH WINKLERSTRASSE 28

1:100  
8424 EMBRACH